

Christ Episcopal Church



INDIVIDUAL ENDOWMENT FUNDS

What is an Endowment Fund?



- A way for you, family, and friends to return God's love to future generations in the church.
- A permanent fund, usually bestowed upon an institution, such as a church, by an individual or a group.
- A way to ensure that a gift from you provides revenue for your desired institution **forever**. A gift to an endowment fund is never spent. Instead, it is invested, and each year the earnings from it can be used by the institution designated by you.

Don't We Already Have Endowment Funds?



- **Yes. Thanks to earlier members of this church and friends of the Day School, there are currently two church-related Endowment Funds:**
 - Irwin Trust – Can't spend principal; 5%/year earnings used to support church's operating budget
 - CCDS Endowment Fund – Available for Christ Church Day School needs

How Will the New Endowment Fund Differ?



- It will be named the Christ Episcopal Church Endowment Fund.
- It will consist of many Individual Endowment Funds and separate parishioner legacy gifts that are invested together.
- It will be a permanent fund in which the principal is never spent. The Vestry may use fund earnings to support parish ministries, operating expenses, or special projects.

What Is An Individual Endowment Fund?



- An endowment fund established by any individual or group as an thanksgiving gift or a memorial.
- These funds can be opened today for any amount. Once in place, the funds can receive additional contributions from anyone to celebrate a birthday, anniversary, or to be a memorial, if a family or group member passes away.
- Fund examples: John & Mary Doe Endowment Fund, Joe Smith Memorial Endowment Fund, Thrift Shop Endowment Fund, Altar Guild Endowment Fund.
- Gifts to each Individual Endowment Fund will be tracked separately and reported periodically.

Why are Endowment Funds Needed?



- To provide a means for parishioners to donate permanent modest and large gifts to the church that will continue to support Christ Church forever.
- To generate a constant income stream that will directly benefit church programs and ministries which cannot be fully funded through the annual operating budget.
- Does not take the place of Annual Stewardship or Special Giving for currently needed ministries (like last year's property maintenance special fund).

How Will The Funds Earnings Benefit Our Parish?



- Provide stability for church programs for generations to come.
- Provide income for additional or larger ministries without taking funds from existing ministries.
- Offer a channel for large gifts that won't overwhelm the parish or discourage ongoing stewardship giving.
- Act as a potential component for buildings or ministries in a capital campaign (should the Vestry choose to allocate earnings in this manner).

How Will Your Endowment Gift Benefit You?



- Gives parishioners and friends the opportunity to give an meaningful gift to support their personal priorities.
- Provides a perpetual reminder of the faith of each donor.
- Multiplies donor's gift by putting it with others' money so it grows under professional management.
- Offers income tax deductions, reduces estate taxes and avoids capital gain taxes.

Who Will Manage the Endowment Fund?



- **The Christ Church Investment Board, which consists of five members appointed by the Vestry.**
- **Must preserve all donated amounts.**
- **Have goal of 5% average return on investment per year for parish ministries.**
- **Will be managed in accordance with all state and federal legal requirements.**

How Do I Begin An Individual Endowment Fund?



- **Complete the form provided.**
- **Select a name for your endowment fund.**
- **Contribute to your endowment fund.**

Is There a Minimum Amount to Contribute?



- No, you can open your Individual Endowment Fund with any amount.
- Funds of less than \$25,000 will be unrestricted. To provide flexibility, funds earnings will be utilized for ministries designated by the Vestry each year.
- Funds of \$25,000 or more can be restricted by the donor (if desired) so that returns generated by them will be used only for specific ministries (such as Education, Youth, Music, Facilities, Outreach/Mission). However, unrestricted funds are encouraged.

What Assets Can Be Donated To My Fund?



- Cash, stocks, bonds
- Real estate or other property accepted by the Vestry
- Charitable gift annuity
- Pooled income fund
- Charitable remainder trust
- Retirement plan proceeds
- Life insurance assignment
- Will or trust bequest

Can I Add to My Endowment Fund?



- Yes, at any time.
- You can also have family and friends add to your fund in honor of a birthday, anniversary, holiday or for any reason.
- All additions will be added to your principal and reported to you.
- Individual endowments will be reported on to the parish periodically.

Can Non-Parishioners Open Funds?



- Yes, any friend of Christ Church is welcome to open an Individual Endowment Fund.
- Such a fund could be opened by children to honor their parents.
- Such a fund would be appropriate for non-parishioners who are married at Christ Church.
- Such a fund could also be a living memorial for anyone having a funeral or memorial service at Christ Church.

How Is the Legacy Circle Different?



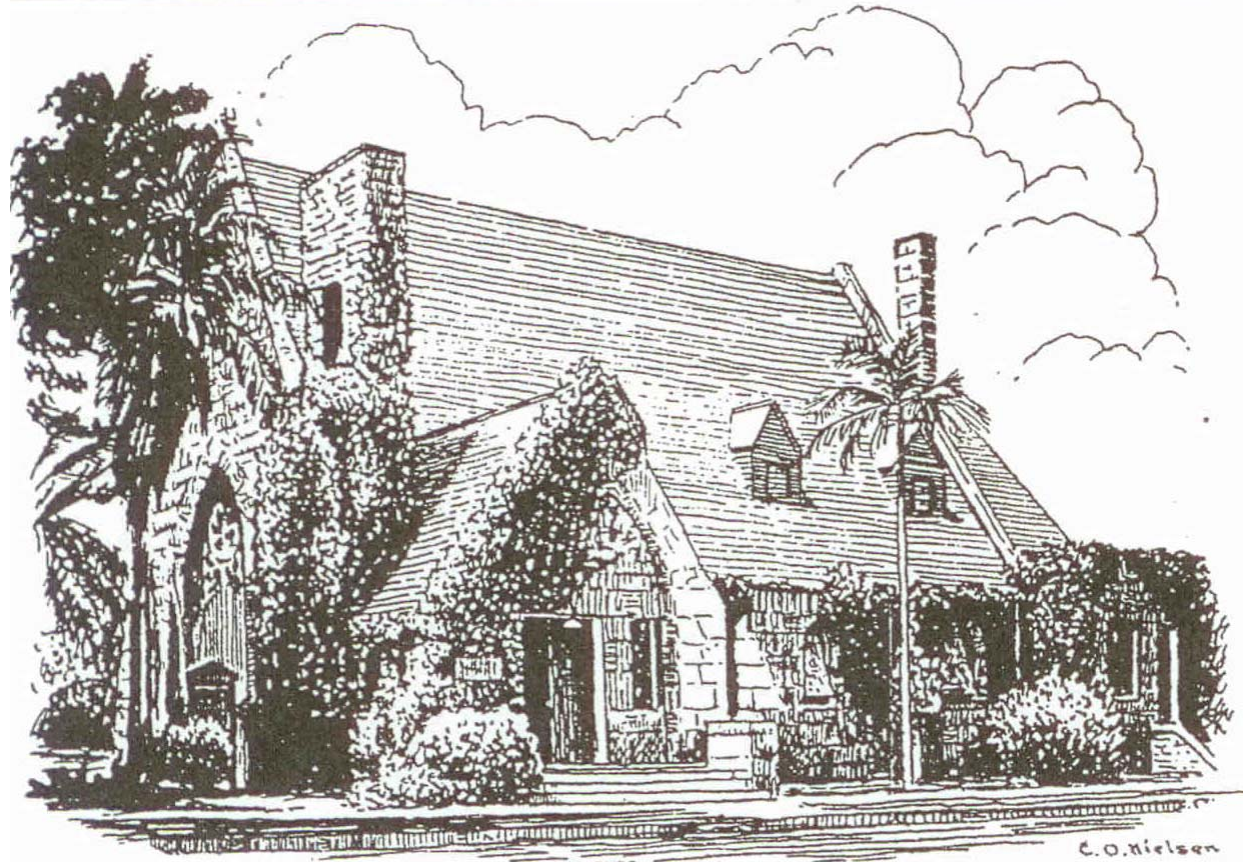
- Legacy Circle gifts are given to the parish as deferred gifts, such as through a will or trust.
- These gifts can be given directly to the Christ Church Endowment Fund or put into your Individual Endowment Fund. Either way, the principal will be preserved in perpetuity, and will be reported on regularly.
- One of the most significant ways Episcopalians give is in making special contributions during our lifetime or at the time of death.

Are We Men and Women of Vision?



- **Yes**
- **We are grateful for the men and women of vision who have come before us at this parish. They looked to the future, establishing and nurturing a church that reaches out in powerful ways to touch the lives of people in our community and around the world.**
- **Our Individual Endowment Funds will connect us to their legacy and help us leave our own legacy for the future.**

Fund
Ministry,
Build a
Legacy,
Help Yourself
and Your
Church
through
Endowment
Giving



**Christ Episcopal Church
Coronado, CA 92118**